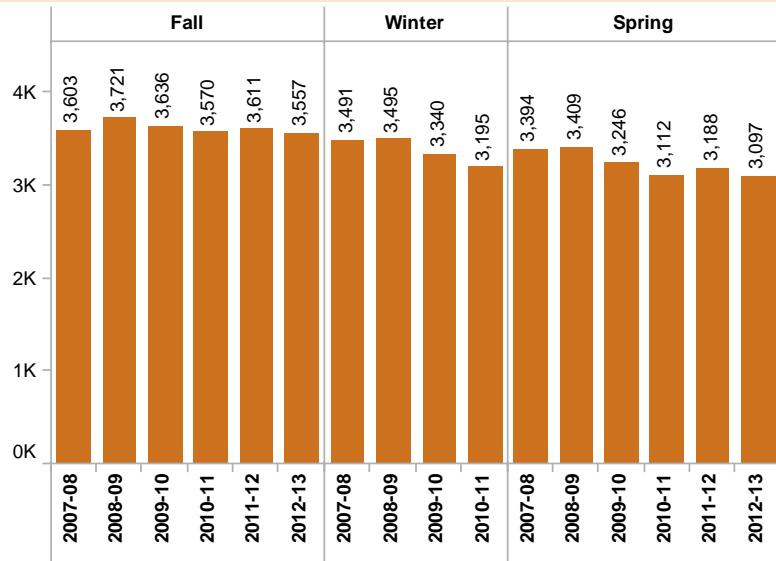
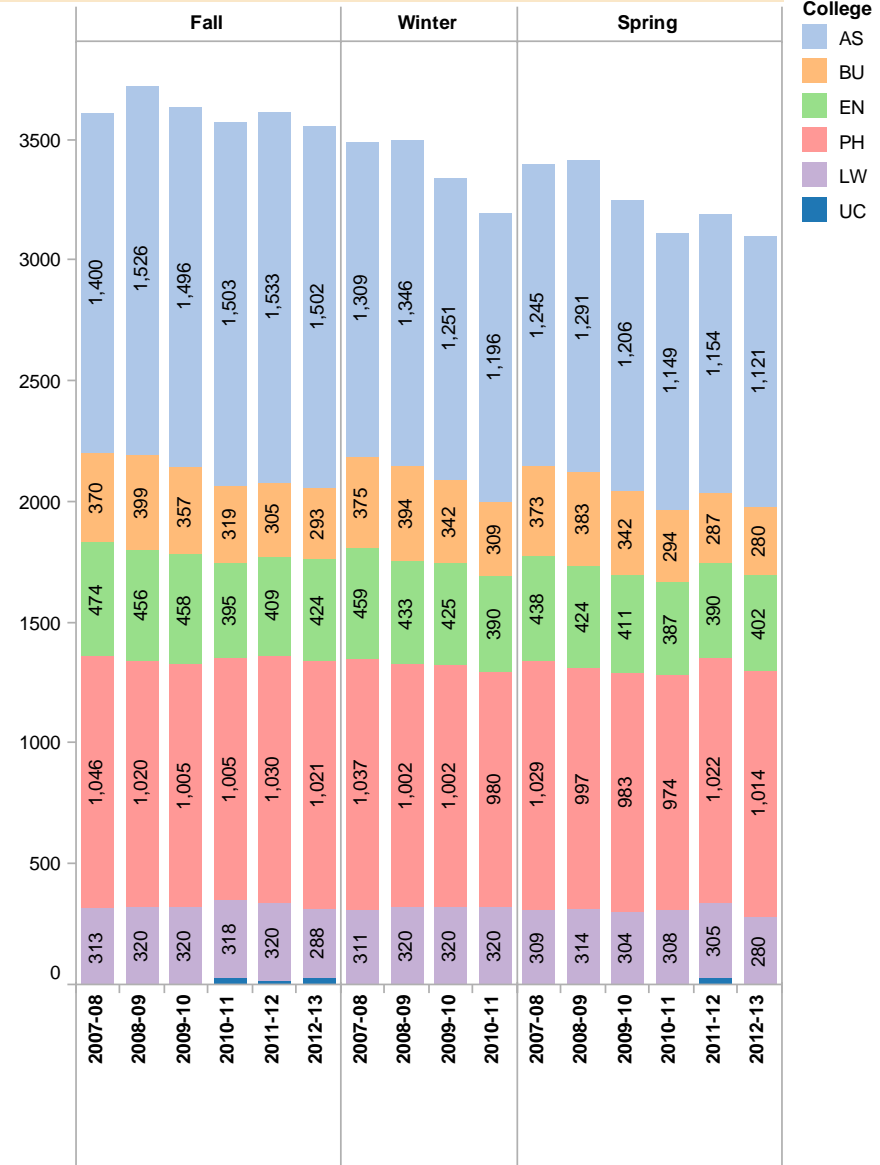


Ohio Northern University - Spring 2013 Enrollment Census Report

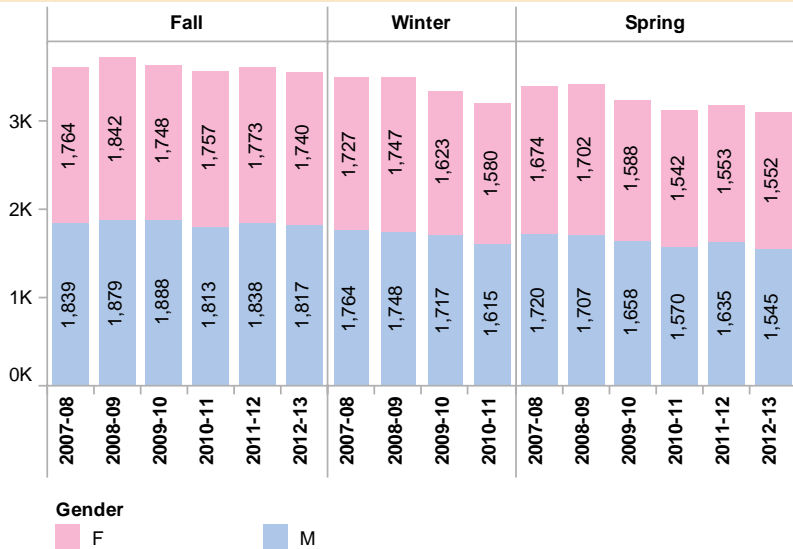
Total Headcount Enrollment



Enrollment by College, Term and Year



Enrollment by Gender, Term and Year



ONU converted from Quarters to Semesters beginning with Fall 2011.
Source: ONU_CENSUS_STUDENT

Ohio Northern University - Enrollment Census Report
Enrollment by College, Year, Term and Student Type

College	College Description	Student Type	2007-08			2008-09			2009-10			2010-11			2011-12		2012-13		
			Fall	Winter	Spring	Fall	Winter	Spring	Fall	Winter	Spring	Fall	Winter	Spring	Fall	Spring	Fall	Spring	
AS	Arts and Sciences	Continuing	932	1,234	1,181	920	1,279	1,226	891	1,185	1,132	876	824	777	819	1,123	817	1,063	
		New Freshman	355		3	384		2	298	5	2	307	289	281	297	1	279	2	
		Post Graduate	3	1		4		1	6			5	5	5	5	2	3	2	
		Readmission	6	5	7	14	5	7	12	6	6	4	6	10	6	9	10	3	
		Transfer	39	17	18	58	28	34	64	29	41	53	55	57	55	10	35	17	
		Unclassified	65	52	36	146	34	21	225	26	25	258	17	19	351	9	358	34	
		Total	1,400	1,309	1,245	1,526	1,346	1,291	1,496	1,251	1,206	1,503	1,196	1,149	1,533	1,154	1,502	1,121	
BU	Business Administration	Continuing	277	369	366	296	389	381	278	340	339	261	250	235	218	283	206	265	
		First time graduate															5	5	
		New Freshman	78			85	1		66			40	42	40	72		58		
		Post Graduate									1	1	1	1				1	
		Readmission		1	1	1	1			1	1		1	5	2		3		
		Transfer	8		2	13	1	1	10		1	8	8	9	7	2	15	3	
		Unclassified	7	5	4	4	2	1	3	1	1	9	7	4	5	2	6	6	
Total	370	375	373	399	394	383	357	342	342	319	309	294	305	287	293	280			
EN	Engineering	Continuing	336	455	437	334	429	420	330	422	406	295	286	285	283	388	291	392	
		New Freshman	126	1	1	114	1		117			96	96	93	122	1	123	3	
		Post Graduate																	
		Readmission	1	1		2			3		1		2	2			1	1	
		Transfer	11	2		4	1	1	5		1	4	6	7	4	1	9	4	
		Unclassified				2	2	2	3	3	3								
Total	474	459	438	456	433	424	458	425	411	395	390	387	409	390	424	402			
PH	Pharmacy	Continuing	871	1,029	1,029	843	1,001	991	837	996	979	819	798	790	814	1,014	841	1,007	
		New Freshman	163			168			160	1		165	164	165	195	4	170	5	
		Non Traditional	3							1						1			
		Post Graduate	2			4			4		1	8	8	7	8		2		
		Readmission	4	6			1	6	1	3	3	6	3	5	4	2	3	1	
		Transfer	3	2		5			3	1		7	7	7	9	1	5	1	
Total	1,046	1,037	1,029	1,020	1,002	997	1,005	1,002	983	1,005	980	974	1,030	1,022	1,021	1,014			
LW	Law	Continuing	185	184	184	196	196	301	193	194	292	192	195	182	194	296	193	264	
		Masters				9	9	9							8	8	14	15	
		New Law	115	114	112	114	114	1	113	112		119	118	116	111	1	78		
		Readmission	1	1	1			1				1	1	3	4		1		
		Transfer	3	3	3			1	2	2		2	2	3	3		1	1	
		Unclassified	9	9	9	1	1	1	12	12	12	4	4	4			1		
Total	313	311	309	320	320	314	320	320	304	318	320	308	320	305	288	280			
UC	University College	Continuing													14		29		
		Unclassified									30			14	16				
		Total									30			14	30		29		
Grand Total				3,603	3,491	3,394	3,721	3,495	3,409	3,636	3,340	3,246	3,570	3,195	3,112	3,611	3,188	3,557	3,097

ONU converted from Quarters to Semesters beginning with Fall 2011.
Source: ONU CENSUS STUDENT

Ohio Northern University - Enrollment Census Report
Full-Time Equivalent (FTE) Enrollment by Student Type

College	College Description	Student Type	2007-08						2008-09						2009-10						2010-11						2011-12						2012-13					
			Fall		Winter		Spring		Fall		Winter		Spring		Fall		Winter		Spring		Fall		Winter		Spring		Fall		Winter		Spring		Fall		Winter		Spring	
			#	FTE	#	FTE	#	FTE	#	FTE	#	FTE	#	FTE	#	FTE	#	FTE	#	FTE	#	FTE	#	FTE	#	FTE	#	FTE	#	FTE	#	FTE	#	FTE	#	FTE		
AS	Arts and Sciences	Continuing	932	927	1,234	1,227	1,181	1,172	920	913	1,279	1,273	1,226	1,221	891	888	1,185	1,181	1,132	1,127	876	870	824	821	777	771	819	810	1,123	1,097	817	799	1,063	1,040				
		New Freshman	355	355			3	3	384	384			2	2	298	298	5	4	2	2	307	307	289	289	281	281	297	297	1	1	279	279	2	2				
		Post Graduate	3	2	1	1			4	4			1	0	6	5					5	4	5	4	5	5	5	4	2	1	3	2	2	1				
		Readmission	6	6	5	5	7	6	14	13	5	4	7	7	12	9	6	5	6	6	4	3	6	6	10	9	6	6	9	8	10	9	3	2				
		Transfer	39	34	17	16	18	17	58	47	28	27	34	29	64	57	29	26	41	31	53	44	55	51	57	52	55	48	10	9	35	30	17	17				
		Unclassified	65	24	52	18	36	13	146	53	34	17	21	12	225	80	26	15	25	16	258	88	17	8	19	9	351	132	9	8	358	131	34	28				
Total			1,400	1,348	1,309	1,267	1,245	1,212	1,526	1,414	1,346	1,322	1,291	1,271	1,496	1,337	1,251	1,231	1,206	1,181	1,503	1,316	1,196	1,179	1,149	1,126	1,533	1,297	1,154	1,123	1,502	1,250	1,121	1,090				
BU	Business Administration	Continuing	277	277	369	369	366	365	296	296	389	388	381	379	278	277	340	339	339	338	261	259	250	249	235	234	218	216	283	279	206	205	265	262				
		First time graduate																																				
		New Freshman	78	78					85	85	1	1			66	66					40	40	42	42	40	40	72	72			5	4	5	4				
		Post Graduate																			1	1	1	1	1	1	1	1					1	0				
		Readmission			1	1	1	1	1	1	1	1	1	1	1	1	1	1	1	1	1	1	1	1	5	5	2	2			3	2						
		Transfer	8	8			2	2	13	12	1	1	1	1	10	10			1	1	8	8	8	8	9	9	7	6	2	1	15	15	3	3				
Unclassified	7	6	5	5	4	4	4	4	2	2	1	1	3	3	1	1	1	1	9	9	7	7	4	4	5	5	2	2	6	6	6	6						
Total			370	369	375	375	373	372	399	398	394	393	383	381	357	356	342	341	342	341	319	317	309	308	294	293	305	302	287	282	293	290	280	275				
EN	Engineering	Continuing	336	326	455	438	437	423	334	323	429	410	420	409	330	320	422	414	406	401	295	288	286	280	285	278	283	274	388	368	291	280	392	378				
		New Freshman	126	126	1	1	1	1	114	114	1	1			117	117					96	96	96	96	93	93	122	122	1	1	123	123	3	3				
		Post Graduate											1	0																								
		Readmission	1	1	1	1			2	2					3	3			1	1			2	2	2	2					1	1	1	1				
		Transfer	11	11	2	2			4	4	1	1	1	1	5	5			1	1	4	4	6	6	7	7	4	4	1	1	9	9	4	4				
		Unclassified							2	2	2	2	2	2	3	3	3	3	3	3													2	2				
Total			474	464	459	442	438	424	456	445	433	414	424	412	458	448	425	417	411	406	395	388	390	384	387	380	409	400	390	370	424	413	402	388				
PH	Pharmacy	Continuing	871	846	1,029	1,008	1,029	1,007	843	824	1,001	984	991	978	837	827	996	985	979	971	819	810	798	791	790	786	814	809	1,014	1,009	841	838	1,007	1,002				
		New Freshman	163	163					168	168					160	160	1	1			165	165	164	164	165	165	195	195	4	4	170	170	5	5				
		Non Traditional	3	1													1	0											1	0								
		Post Graduate	2	1					4	4					4	4			1	1	8	8	8	8	7	7	8	7			2	2						
		Readmission	4	4	6	5					1	1	6	6	1	1	3	2	3	3	6	5	3	3	5	4	4	4	2	1	3	2	1	1				
		Transfer	3	3	2	1			5	5					3	3	1	1			7	7	7	6	7	7	9	9	1	1	5	5	1	1				
Total			1,046	1,018	1,037	1,015	1,029	1,007	1,020	1,001	1,002	985	997	984	1,005	995	1,002	989	983	975	1,005	996	980	973	974	969	1,030	1,024	1,022	1,015	1,021	1,016	1,014	1,009				
LW	Law	Continuing	185	184	184	182	184	183	196	195	196	194	301	299	193	191	194	191	292	290	192	191	195	193	182	181	194	193	296	296	193	193	264	263				
		Masters							9	9	9	9	9	6											8	8	8	7	14	13	15	13						
		New Law	115	115	114	114	112	112	114	114	114	114	1	1	113	113	112	112			119	119	118	118	116	116	111	111	1	0	78	78						
		Readmission	1	1	1	1	1	1					1	0					1	1	1	1	1	1	3	2	4	3			1	1						
		Transfer	3	3	3	3	3	3					1	1	2	2	2	2			2	2	2	2	3	3	3	3			1	1	1	1				
		Unclassified	9	9	9	8	9	8	1	1	1	1	1	1	1	1	12	12	12	12	12	8	4	4	4	4	4	3			1	0						
Total			313	312	311	308	309	308	320	319	320	318	314	309	320	318	320	317	304	298	318	317	320	318	308	305	320	318	305	304	288	287	280	277				
UC	University College	Continuing																									14	14	29	29								
		Unclassified																			30	10					14	14	16	16								
Total																					30	10					14	14	30	30	29	29						
Grand Total			3,603	3,511	3,491	3,407	3,394	3,322	3,721	3,576	3,495	3,432	3,409	3,357	3,636	3,454	3,340	3,295	3,246	3,201	3,570	3,344	3,195	3,162	3,112	3,072	3,611	3,355	3,188	3,124	3,557	3,285	3,097	3,039				

ONU converted from Quarters to Semesters beginning with Fall 2011. FTE calculation is based on the following formula: FTE = full time headcount + (part-time headcount / 3).

Source: ONU_CENSUS_STUDENT

Ohio Northern University - Enrollment Census Report
Enrollment by College, Year, Term and Class

College	College Description	Class	2007-08			2008-09			2009-10			2010-11			2011-12		2012-13	
			Fall	Winter	Spring	Fall	Winter	Spring	Fall	Winter	Spring	Fall	Winter	Spring	Fall	Spring	Fall	Spring
AS	Arts and Sciences	Freshman	416	331	255	462	355	296	384	291	235	390	286	207	356	263	339	255
		Sophomore	307	295	259	284	288	246	276	291	246	250	252	236	265	235	251	240
		Junior	279	253	253	277	274	261	276	266	250	262	275	240	240	227	232	225
		Senior	331	377	441	352	391	462	331	369	444	336	358	441	309	375	296	355
		ESL Program													14	20	23	12
		Exchange Student	2									3	3	3	5	6	16	9
		High School	11	15	15	16	13	7	9	6	4	8	5	6	5	4	7	
		High School Cooperative Prog	32	22	7	111			192			238	1		316		323	
		Post Graduate	4	2	2	5	5	6	10	9	7	9	10	10	14	16	10	11
		Special	18	14	13	13	13	8	14	15	18	7	6	4	9	8	5	14
		Transient				6	7	5	4	4	2			2				
		Total			1,400	1,309	1,245	1,526	1,346	1,291	1,496	1,251	1,206	1,503	1,196	1,149	1,533	1,154
BU	Business Administration	Freshman	104	88	72	105	91	77	88	67	57	57	43	34	82	63	89	57
		Sophomore	85	90	92	97	97	81	91	88	80	67	67	59	50	48	60	61
		Junior	92	90	78	83	84	81	87	88	76	86	84	73	76	62	59	53
		Senior	82	102	127	110	120	143	88	98	128	99	107	123	90	106	73	98
		Exchange Student	6	5	3							9	7	4	5	6	6	4
		Post Graduate										1	1	1	2	2		1
		Special	1		1													
		Transient				4	2	1	3	1	1							
		Graduate Student															6	6
		Total			370	375	373	399	394	383	357	342	342	319	309	294	305	287
EN	Engineering	Freshman	146	117	89	137	111	89	133	102	76	105	87	69	126	97	136	100
		Sophomore	119	110	95	95	88	82	106	97	93	81	82	75	88	77	101	92
		Junior	87	102	98	114	111	99	87	83	81	97	88	70	77	78	81	75
		Senior	122	130	156	108	121	151	128	139	157	111	132	172	118	138	106	133
		Exchange Student																2
		Post Graduate																
		Transient				2	2	2	3	3	3							
Total			474	459	438	456	433	424	458	425	411	395	390	387	409	390	424	402
PH	Pharmacy	Pharmacy - First Year	182	169	160	181	168	167	180	167	158	185	170	170	219	211	227	192
		Pharmacy - Second Year	179	170	164	182	173	158	194	179	173	178	163	153	169	163	160	187
		Pharmacy - Third Year	149	156	159	165	163	176	152	167	167	168	172	177	159	160	162	159
		Pharmacy - Fourth Year	157	172	172	147	152	156	159	166	165	152	158	157	161	165	158	154
		Pharmacy - Fifth Year	166	167	166	154	160	160	147	148	150	165	164	162	163	161	156	167
		Pharmacy - Sixth Year	175	176	177	163	162	162	159	159	159	145	143	150	154	155	157	155
		Pharmacy - PharmD Didactic	38	27	31	28	24	18	14	16	11	12	10	5	5	7	1	
		Total			1,046	1,037	1,029	1,020	1,002	997	1,005	1,002	983	1,005	980	974	1,030	1,022
LW	Law	Law - First Year	118	116	112	113	113	110	116	115	110	120	119	116	111	110	80	79
		Law - Second Year	98	99	99	98	98	97	95	96	82	97	100	87	102	79	94	82
		Law - Third Year	89	88	90	100	100	98	98	98	101	96	96	99	98	108	99	104
		LLM	8	8	8	9	9	9	11	11	11	5	5	6	9	8	15	15
		Total			313	311	309	320	320	314	320	320	304	318	320	308	320	305
UC	University College	Continuing Educ-Certificate												30				
		Total													30			29
Grand Total			3,603	3,491	3,394	3,721	3,495	3,409	3,636	3,340	3,246	3,570	3,195	3,112	3,611	3,188	3,557	3,097

ONU converted from Quarters to Semesters beginning with Fall 2011.
Source: ONU_CENSUS_STUDENT

Ohio Northern University - Enrollment Census Report

Enrollment by College, Year, Term and Primary Major

College	College Description	Major	2007-08			2008-09			2009-10			2010-11			2011-12		2012-13	
			Fall	Winter	Spring	Fall	Winter	Spring	Fall	Winter	Spring	Fall	Winter	Spring	Fall	Spring	Fall	Spring
AS	Arts and Sciences	Advertising Design				1	2	2	1	1	1	2	2	3	5	5	6	6
		Art	31	33	32	29	28	27	20	19	19	11	11	11				
		Art Education									1	1	1	2	4	5	4	3
		Athletic Training	22	19	17	29	25	20	28	24	20	24	18	16	23	20	19	16
		Biochemistry ACS Certified	13	10	10	16	16	14	17	14	14	21	17	16	26	22	22	21
		Biology	149	128	127	150	143	133	144	132	128	142	137	134	154	145	148	134
		Bluffton Studentattending ONU																7
		Chemistry	33	31	30	34	32	28	29	25	25	34	31	29	31	28	32	30
		Clinical Lab Sci Certificate				1	1	1	2	2	2	1	1	2				
		Clinical Laboratory Science	12	11	9	6	7	8	5	5	5	5	5	5	13	12	4	3
		Comm Arts/Comm Studies													2	9	17	20
		Comm Arts/Electronic Media													2	3	3	4
		Comm Arts/Public Relations													2	5	14	14
		Communication Arts	98	100	102	97	88	94	79	79	81	84	83	85	55	45	22	20
		Communication Studies													2			
		Construction Management				12	19	19	24	27	27	29	30	27	25	31	36	40
		Creative Writing	19	20	22	25	20	22	22	21	21	19	19	19	13	15	19	18
		Criminal Justice	66	64	62	61	60	65	54	54	48	48	46	45	44	36	36	34
		Design															1	1
		Early Childhood Education	43	39	33	29	29	30	26	22	19	21	25	25	27	25	24	26
		Education Studies															1	1
		Environmental and Field Bio													3	5	15	18
		Environmental Studies	8	7	6	9	8	12	13	12	12	13	13	12	11	11	6	4
		Exercise Physiology	42	44	46	55	52	52	47	53	49	49	51	52	53	55	57	55
		Forensic Biology	57	52	47	59	52	49	59	54	52	56	49	45	45	37	35	34
		French	2	2	2	2	3	2	1	1	1	1	1	1	1	1	1	1
		General Sciences	12	8	5	13	11	6	8	7	4	11	11	7	8	3	5	2
		General Studies	143	116	82	222	94	68	297	78	67	323	62	45	383	52	397	47
		German	1	1	1	1	1	1	2	2	2	2	2	2	1	1	1	1
		Graphic Design				3	4	5	10	10	10	13	13	12	16	16	11	11
		Health Education	4	4	4	5	5	5	6	5	5	5	7	6	6	6	3	1
History	27	27	25	21	21	20	24	24	24	23	19	18	22	22	20	18		
Intensive English													14	20	23	12		
International Studies	10	12	9	12	12	12	11	11	9	12	10	9	5	3	2	2		
International Theatre Product													3					
Journalism	17	14	13	17	17	15	11	10	11	9	8	7	5	4	2	2		
Language Arts Education	22	22	24	25	25	25	20	20	22	17	15	13	12	11	11	10		
Literature	12	11	11	12	12	11	7	7	7	7	6	7	8	8	9	7		

ONU converted from Quarters to Semesters beginning with Fall 2011. Counts shown here include only first majors of students. For a complete list of first and second majors by division in the fall term, please refer to the ONU Fac Book.

Communication Arts majors were previously offered as concentrations, therefore only totals are provided for past years through Fall 2010.

Source: ONU_CENSUS_STUDENT

Ohio Northern University - Enrollment Census Report

Enrollment by College, Year, Term and Primary Major

College	College Description	Major	2007-08			2008-09			2009-10			2010-11			2011-12		2012-13	
			Fall	Winter	Spring	Fall	Winter	Spring	Fall	Winter	Spring	Fall	Winter	Spring	Fall	Spring	Fall	Spring
AS	Arts and Sciences	Manufacturing Technology				17	28	36	41	47	53	47	48	48	46	43	37	37
		Mathematical Statistics													7	7	8	9
		Mathematics	29	22	22	21	19	18	17	21	19	18	16	16	15	15	13	10
		Mathematics/Statistics	5	8	6	4	6	6	4	4	6	6	6	5				
		Medical Laboratory Science															8	11
		Medicinal Chemistry	7	6	4	10	6	7	5	4	4	6	6	6	6	4	2	1
		Middle Childhood Education	36	34	33	38	37	37	40	38	38	29	25	26	18	17	15	15
		Molecular Biology	11	11	11	10	10	9	7	6	6	6	6	7	7	7	7	7
		Music	8	8	8	5	4	3	2	1	2	4	6	6	5	7	8	9
		Music Composition	5	5	5	7	5	4	3	3	3	3	5	5	5	5	4	2
		Music Education	40	38	36	37	33	29	32	30	26	36	29	25	36	30	32	28
		Music Performance	13	10	11	9	12	11	17	19	18	23	20	19	13	12	9	8
		Music with Electives in Busine	5	5	5	6	6	5	10	8	9	6	2	2	1	1		
		Musical Theatre													10	1	1	
		Nursing	87	81	80	111	113	112	114	114	121	127	124	130	119	117	119	132
		Performance													3	3	9	9
		Philosophy	1			2	2	2	3	3	4	4	4	3	3	2	1	2
		Physical Education	9	4	6	8	9	9	10	10	8	11	8	7	7	8	8	5
		Physics	8	8	8	9	8	8	7	7	6	9	8	6	5	5	5	4
		Political Science	39	39	36	39	34	28	30	31	28	23	22	21	27	24	26	26
		Professional Writing	13	13	13	12	12	10	7	6	6	4	4	3	4	8	10	10
		Psychology	61	59	59	69	70	72	64	67	61	66	65	66	60	56	53	53
		Public Relations													3			
		Religion	8	6	5	3	2	2	2	1	1			1	1	2	2	4
		Social Studies	16	19	19	19	18	18	15	17	14	16	19	18	18	16	14	12
		Sociology	5	5	5	5	6	7	8	9	9	9	9	9	8	9	6	8
		Spanish	6	8	8	7	5	6	6	4	4	3	4	3	4	4	4	4
		Sport Management	58	56	57	59	59	63	55	55	51	44	45	42	49	45	36	34
		Studio Arts				4	5	5	7	7	7	7	10	10	10	11	7	7
		Technology	71	73	74	56	38	28	11	8	5	3	1	1				
		Technology Education	6	6	7	8	6	5	6	6	4	7	7	5	4	3	2	1
		Theatre													5			
		Theatre Arts/Intl Production													2	5	9	10
Theatre Arts/Musical Theatre													12	25	23			
Theatre Arts/Theatre													3	8	10	13		
Youth Ministry	10	10	8	5	6	5	6	6	7	3	4	4	5	6	6	4		
Total	1,400	1,309	1,245	1,526	1,346	1,291	1,496	1,251	1,206	1,503	1,196	1,149	1,533	1,154	1,502	1,121		
BU	Business	Accounting	95	97	103	93	93	93	82	83	89	78	75	74	79	80	91	95

ONU converted from Quarters to Semesters beginning with Fall 2011. Counts shown here include only first majors of students. For a complete list of first and second majors by division in the fall term, please refer to the ONU Fac Book.

Communication Arts majors were previously offered as concentrations, therefore only totals are provided for past years through Fall 2010.

Source: ONU_CENSUS_STUDENT

Ohio Northern University - Enrollment Census Report
Enrollment by College, Year, Term and Primary Major

College	College Description	Major	2007-08			2008-09			2009-10			2010-11			2011-12		2012-13	
			Fall	Winter	Spring	Fall	Winter	Spring	Fall	Winter	Spring	Fall	Winter	Spring	Fall	Spring	Fall	Spring
BU	Business Administration	Business Administration	45	32	24	39	34	31	36	33	28	28	22	11	16	20	24	12
		Finance	17	22	24	37	34	31	24	20	21	24	23	25	24	22	13	11
		International Business & Econ Management	38	35	38	39	37	37	34	29	29	24	25	27	28	23	21	15
		Marketing	92	87	86	75	75	74	69	69	68	60	59	55	56	45	44	45
		Pharmaceutical Business	67	72	68	72	74	72	62	59	58	53	52	48	47	44	43	46
			16	30	30	44	47	45	50	49	49	52	53	54	55	53	57	56
		Total	370	375	373	399	394	383	357	342	342	319	309	294	305	287	293	280
EN	Engineering	Civil Engineering	108	102	97	103	94	94	100	98	94	95	95	94	97	93	94	81
		Computer Engineering	68	66	60	58	54	53	60	53	50	46	43	42	41	35	37	34
		Computer Science	25	22	25	23	23	21	20	20	19	13	12	11	24	21	33	32
		Electrical Engineering	76	78	75	73	71	71	79	68	67	59	61	65	48	50	52	54
		Engineering Education													4	5	12	12
		General Studies																2
		Mechanical Engineering	197	191	181	199	191	185	199	186	181	182	179	175	195	186	196	187
Total	474	459	438	456	433	424	458	425	411	395	390	387	409	390	424	402		
PH	Pharmacy	Pharmacy	1,046	1,037	1,029	1,020	1,002	997	1,005	1,002	983	1,005	980	974	1,030	1,022	1,021	1,014
		Total	1,046	1,037	1,029	1,020	1,002	997	1,005	1,002	983	1,005	980	974	1,030	1,022	1,021	1,014
LW	Law	Law	313	311	309	320	320	314	320	320	304	318	320	308	320	305	288	280
		Total	313	311	309	320	320	314	320	320	304	318	320	308	320	305	288	280
UC	University College	Prison Management Certificat..										30		14	30	29		
		Total											30		14	30	29	
Grand Total			3,603	3,491	3,394	3,721	3,495	3,409	3,636	3,340	3,246	3,570	3,195	3,112	3,611	3,188	3,557	3,097

ONU converted from Quarters to Semesters beginning with Fall 2011. Counts shown here include only first majors of students. For a complete list of first and second majors by division in the fall term, please refer to the ONU Fac Book.

Communication Arts majors were previously offered as concentrations, therefore only totals are provided for past years through Fall 2010.

Source: ONU_CENSUS_STUDENT

Ohio Northern University - Enrollment Census Report

Enrollment by College, Year, Term and Ethnicity

College	College Description	Ethnicity	2007-08			2008-09			2009-10			2010-11			2011-12		2012-13	
			Fall	Winter	Spring	Fall	Winter	Spring	Fall	Winter	Spring	Fall	Winter	Spring	Fall	Spring	Fall	Spring
AS	Arts and Sciences	African American, Non-Hispanic	54	53	46	66	60	55	68	55	46	66	46	40	67	48	59	44
		American Indian/Alaskan Native	6	3	3	9	8	6	6	6	5	2	1	1	2	2	1	1
		Asian, Asian/Pacific Islander	15	10	9	16	16	15	12	10	9	12	12	12	16	10	10	4
		Hispanic	23	21	20	32	27	27	30	28	29	27	27	28	41	31	33	22
		International	12	11	9	27	26	25	25	24	25	31	26	27	39	48	65	51
		Multi-Racial										28	20	21	32	31	44	46
		Native Hawaiian/Pacific Island							1	1	1	1	1	1	2	2	2	2
		White, Non-Hispanic	1,290	1,211	1,158	1,376	1,209	1,163	1,352	1,127	1,091	1,333	1,061	1,019	1,323	979	1,269	945
		Unknown							2			3	2		11	3	19	6
	Total	1,400	1,309	1,245	1,526	1,346	1,291	1,496	1,251	1,206	1,503	1,196	1,149	1,533	1,154	1,502	1,121	
BU	Business Administration	African American, Non-Hispanic	12	12	13	19	20	21	27	26	26	18	18	18	19	18	23	20
		American Indian/Alaskan Native	2	3	3	2	2	2	2	2	2	1	1	1			1	1
		Asian, Asian/Pacific Islander	6	7	7	10	10	9	5	4	4	6	5	5	6	5	4	4
		Hispanic	6	5	5	7	7	7	5	5	6	7	7	7	5	5	6	5
		International	13	12	10	14	13	10	15	11	11	16	16	17	20	20	20	17
		Multi-Racial										11	10	8	8	8	11	12
		White, Non-Hispanic	331	336	335	347	342	334	303	294	293	260	252	238	247	231	228	221
		Total	370	375	373	399	394	383	357	342	342	319	309	294	305	287	293	280
EN	Engineering	African American, Non-Hispanic	3	2	2	4	4	4	5	5	4	4	4	4	5	4	5	6
		American Indian/Alaskan Native							2	1	1							
		Asian, Asian/Pacific Islander	2	2	2	4	4	4	7	6	5	2	2	2	1	1	2	1
		Hispanic	2	2	2	1	1	1	5	5	4	2	2	2	3	3	3	2
		International	13	14	14	17	17	18	18	17	17	13	14	16	14	14	11	16
		Multi-Racial										6	6	6	6	3	5	5
		Native Hawaiian/Pacific Island	1	1														
		White, Non-Hispanic	453	438	418	430	407	397	421	391	380	368	362	357	380	365	398	372
Total	474	459	438	456	433	424	458	425	411	395	390	387	409	390	424	402		
PH	Pharmacy	African American, Non-Hispanic	14	11	11	18	18	17	19	17	17	18	18	14	17	20	16	17
		American Indian/Alaskan Native	1	1	1	1	1	1	2	1	1	1	1	1	1	1		1
		Asian, Asian/Pacific Islander	38	37	39	39	37	36	38	39	37	35	34	34	39	37	39	36
		Hispanic	4	3	4	3	3	3	3	4	3	2	2	2	5	4	7	7
		International	19	20	19	22	20	19	24	25	27	30	27	32	37	38	45	48
		Multi-Racial										14	14	14	14	15	22	22
		White, Non-Hispanic	970	965	955	937	923	921	919	916	898	905	884	877	917	906	891	882
		Unknown														1	1	1
Total	1,046	1,037	1,029	1,020	1,002	997	1,005	1,002	983	1,005	980	974	1,030	1,022	1,021	1,014		
LW	Law	African American, Non-Hispanic	19	19	19	26	26	25	22	22	21	22	22	22	18	18	19	18
		American Indian/Alaskan Native	1	1	1	2	2	2	2	2	2	1	1	1	1	1	1	1
		Asian, Asian/Pacific Islander	10	10	10	10	10	10	12	12	10	5	5	5	6	6	2	2
		Hispanic	4	4	4	4	4	4	5	5	5	4	4	4	5	5	3	3
		International	8	8	8	8	8	8	12	12	12	5	5	5	9	9	16	16
		Multi-Racial										3	3	3	5	5	6	6

ONU converted from Quarters to Semesters beginning with Fall 2011. To be in compliant with the new IPEDS reporting categories, the Multi-Racial category was added in 2010-11

Source: ONU_CENSUS_STUDENT

Ohio Northern University - Enrollment Census Report
Enrollment by College, Year, Term and Ethnicity

College	College Description	Ethnicity	2007-08			2008-09			2009-10			2010-11			2011-12		2012-13	
			Fall	Winter	Spring	Fall	Winter	Spring	Fall	Winter	Spring	Fall	Winter	Spring	Fall	Spring	Fall	Spring
LW	Law	Native Hawaiian/Pacific Island	1	1	1													
		White, Non-Hispanic	270	268	266	270	270	265	267	267	254	278	280	268	273	258	236	229
		Unknown													3	3	5	5
		Total	313	311	309	320	320	314	320	320	304	318	320	308	320	305	288	280
UC	University College	International									30			14	30	29		
		Total									30			14	30	29		
Grand Total			3,603	3,491	3,394	3,721	3,495	3,409	3,636	3,340	3,246	3,570	3,195	3,112	3,611	3,188	3,557	3,097

ONU converted from Quarters to Semesters beginning with Fall 2011. To be in compliant with the new IPEDS reporting categories, the Multi-Racial category was added in 2010-11

Source: ONU_CENSUS_STUDENT

Ohio Northern University - Enrollment Census Report
Enrollment by College, Year, Term and Religious Preference

College	College Description	Religious Preference	2007-08			2008-09			2009-10			2010-11			2011-12		2012-13	
			Fall	Winter	Spring	Fall	Winter	Spring	Fall	Winter	Spring	Fall	Winter	Spring	Fall	Spring	Fall	Spring
AS	Arts and Sciences	No Preference	409	379	364	439	370	362	549	342	332	632	375	352	505	340	433	371
		Roman Catholic	342	306	293	403	341	325	324	302	287	291	277	276	281	268	263	246
		Other denominations or faith	254	246	235	290	266	248	291	275	273	292	265	254	469	268	540	265
		United Methodist	241	226	207	212	200	195	173	171	163	155	148	144	142	134	119	112
		Lutheran	78	80	74	91	85	81	80	80	76	70	71	65	69	64	63	55
		Baptist	46	42	40	49	45	45	43	44	38	32	30	28	37	35	41	32
		Presbyterian	24	22	24	31	28	24	24	26	24	19	19	18	17	18	17	18
		Islam		2	1	2	2	2	3	3	7	5	4	4	4	18	16	13
		United Church of Christ	5	5	6	8	8	8	8	7	6	6	6	6	6	6	5	4
		Jewish	1	1	1	1	1	1	1	1	1	1	1	2	3	3	4	3
	Jehovahs Witnesses															1	2	
	Total		1,400	1,309	1,245	1,526	1,346	1,291	1,496	1,251	1,206	1,503	1,196	1,149	1,533	1,154	1,502	1,121
BU	Business Administration	No Preference	110	110	106	112	107	99	108	101	103	99	93	91	99	96	115	105
		Roman Catholic	86	88	92	94	98	95	88	86	84	84	80	76	78	73	58	57
		Other denominations or faith	62	67	62	70	67	71	66	60	58	57	60	55	59	54	51	52
		United Methodist	67	63	64	69	69	65	53	52	52	42	41	34	31	30	28	26
		Lutheran	23	24	25	28	29	29	22	22	23	17	16	16	18	17	18	20
		Baptist	8	8	10	12	10	10	9	9	10	8	6	8	9	9	13	11
		Presbyterian	11	12	11	12	11	11	10	11	11	10	10	10	7	6	5	5
		Islam	1	1	1	1	2	2					1	2	2		2	2
		United Church of Christ	1	1	1				1	1	1	1	1	1	1	1		
		Jewish	1	1	1	1	1	1				1	1	1	1	1	2	2
	Jehovahs Witnesses															1		
	Total		370	375	373	399	394	383	357	342	342	319	309	294	305	287	293	280
EN	Engineering	No Preference	125	118	111	114	106	104	120	108	101	114	113	112	106	100	105	102
		Roman Catholic	123	119	114	121	116	114	116	109	108	94	93	90	101	100	112	101
		Other denominations or faith	78	76	76	87	80	77	93	89	83	78	76	76	99	94	114	107
		United Methodist	86	85	81	72	71	70	69	63	62	57	56	55	55	52	48	46
		Lutheran	28	28	26	33	32	32	33	31	31	22	20	21	19	17	18	17
		Baptist	11	11	10	10	10	9	7	7	8	9	10	9	11	9	10	9
		Presbyterian	12	10	9	8	7	7	9	8	8	10	10	10	10	10	11	11
		Islam	9	10	10	10	10	10	10	9	9	9	10	12	7	7	4	7
		United Church of Christ	1	1														
		Jewish	1	1	1	1	1	1	1	1	1	2	2	2	1	1	2	2
	Total		474	459	438	456	433	424	458	425	411	395	390	387	409	390	424	402
PH	Pharmacy	No Preference	184	181	177	178	165	161	155	155	153	165	160	158	180	181	183	181
		Roman Catholic	388	388	385	370	367	367	373	373	364	367	359	361	367	360	356	353
		Other denominations or faith	190	186	186	192	194	193	197	196	192	202	195	192	221	215	223	219
		United Methodist	141	141	140	140	137	138	144	143	141	132	130	126	122	122	107	106
		Lutheran	74	72	73	72	71	71	70	68	67	65	64	63	61	61	62	61
		Baptist	35	35	35	34	34	33	28	29	28	31	31	29	35	35	34	34
		Presbyterian	25	25	24	24	24	24	25	24	24	26	25	25	23	23	21	21
		Islam	4	4	4	4	4	4	4	5	5	7	6	10	11	15	22	26
		United Church of Christ	3	3	3	5	5	5	8	8	8	8	8	8	8	8	8	8
		Jewish	2	2	2	1	1	1	1	1	1	2	2	2	2	2	5	5
	Total		1,046	1,037	1,029	1,020	1,002	997	1,005	1,002	983	1,005	980	974	1,030	1,022	1,021	1,014

ONU converted from Quarters to Semesters beginning with Fall 2011.
Source: ONU_CENSUS_STUDENT

Ohio Northern University - Enrollment Census Report
Enrollment by College, Year, Term and Religious Preference

College	College Description	Religious Preference	2007-08			2008-09			2009-10			2010-11			2011-12		2012-13	
			Fall	Winter	Spring	Fall	Winter	Spring	Fall	Winter	Spring	Fall	Winter	Spring	Fall	Spring	Fall	Spring
LW	Law	No Preference	231	229	227	217	217	213	152	153	140	132	131	131	142	136	164	158
		Roman Catholic	30	28	28	42	42	41	63	63	63	70	72	65	59	55	32	32
		Other denominations or faith	23	24	24	39	39	38	74	73	70	80	80	77	88	84	74	72
		United Methodist	14	14	14	6	6	6	12	12	12	13	14	13	11	11	4	4
		Lutheran	7	7	7	4	4	4	5	5	5	8	8	7	8	7	6	6
		Baptist	5	5	5	6	6	6	7	7	7	8	8	8	6	6	4	4
		Presbyterian	2	2	2	4	4	4	5	5	5	6	6	6	4	4	2	2
		Islam													1	1	2	1
		Jewish	1	2	2	2	2	2	2	2	2	2	1	1	1	1		1
	Total		313	311	309	320	320	314	320	320	304	318	320	308	320	305	288	280
UC	University College	No Preference																
		Islam													14	30		29
	Total											30		14	30		29	
Grand Total			3,603	3,491	3,394	3,721	3,495	3,409	3,636	3,340	3,246	3,570	3,195	3,112	3,611	3,188	3,557	3,097

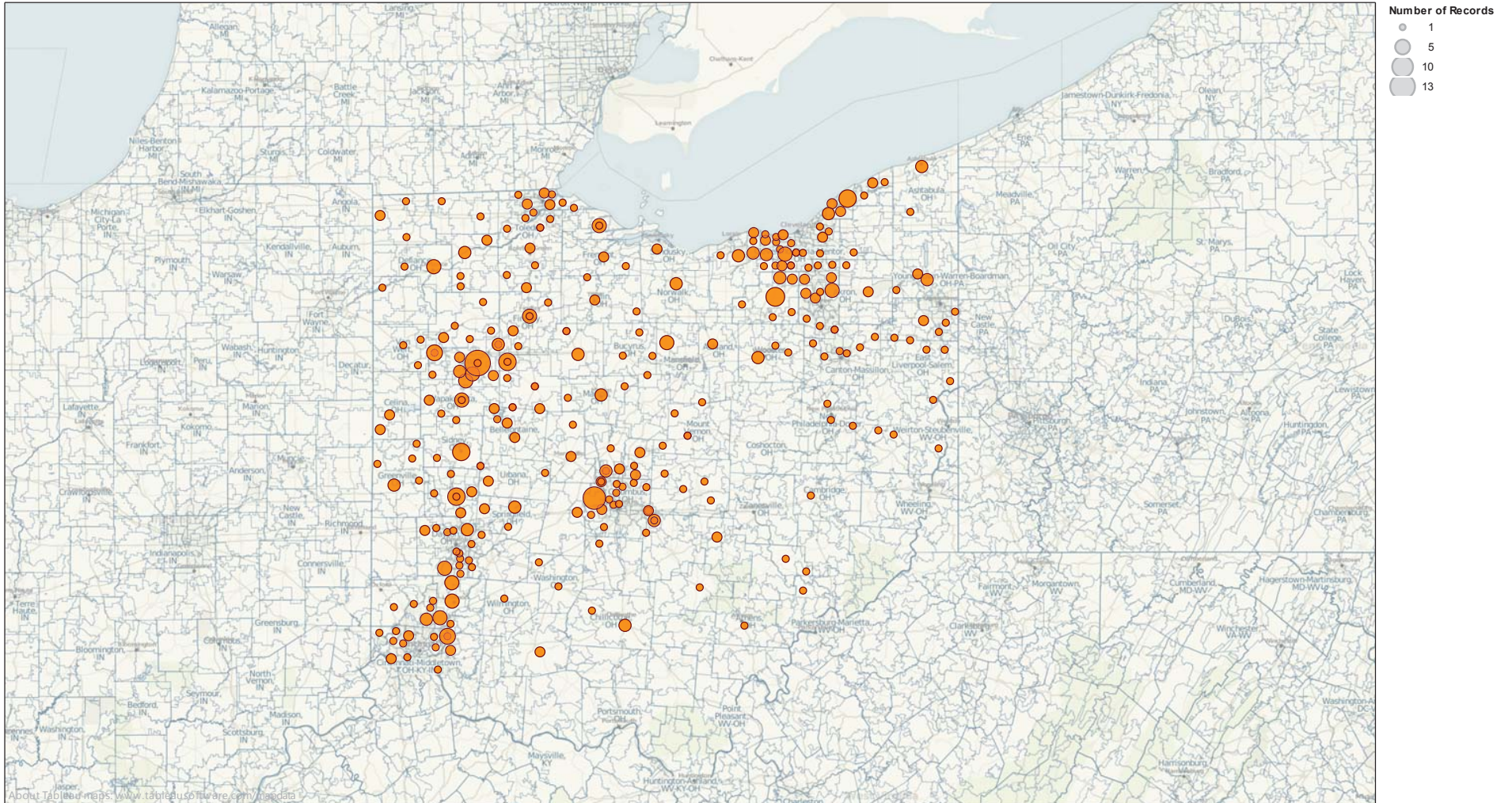
ONU converted from Quarters to Semesters beginning with Fall 2011.
Source: ONU_CENSUS_STUDENT

Ohio Northern University - Enrollment Census Report
Mean ACT Composite Scores of First-Time Freshmen by Year (Fall Terms)

College	College Description	Number Submitting ACT Scores						Avg. ACT Scores					
		2007-08	2008-09	2009-10	2010-11	2011-12	2012-13	2007-08	2008-09	2009-10	2010-11	2011-12	2012-13
BU	Business Administration	73	78	59	37	61	52	25.2	23.7	23.7	25.1	24.3	23.8
EN	Engineering	114	106	108	93	114	112	26.1	26.4	26.5	27.2	26.7	26.1
PH	Pharmacy	150	161	155	153	189	157	29.2	28.2	28.9	29.1	28.8	28.5
AS	Arts and Sciences	324	348	276	280	275	265	24.4	24.1	24.6	25.2	25.3	24.5
Grand Total		661	693	598	563	639	586	25.9	25.4	26.0	26.6	26.5	25.8

Source: ONU_CENSUS_STUDENT

Ohio Northern University - Enrollment Census Report
First-Time Freshman Students from Ohio by Zip Code (Fall 2012)

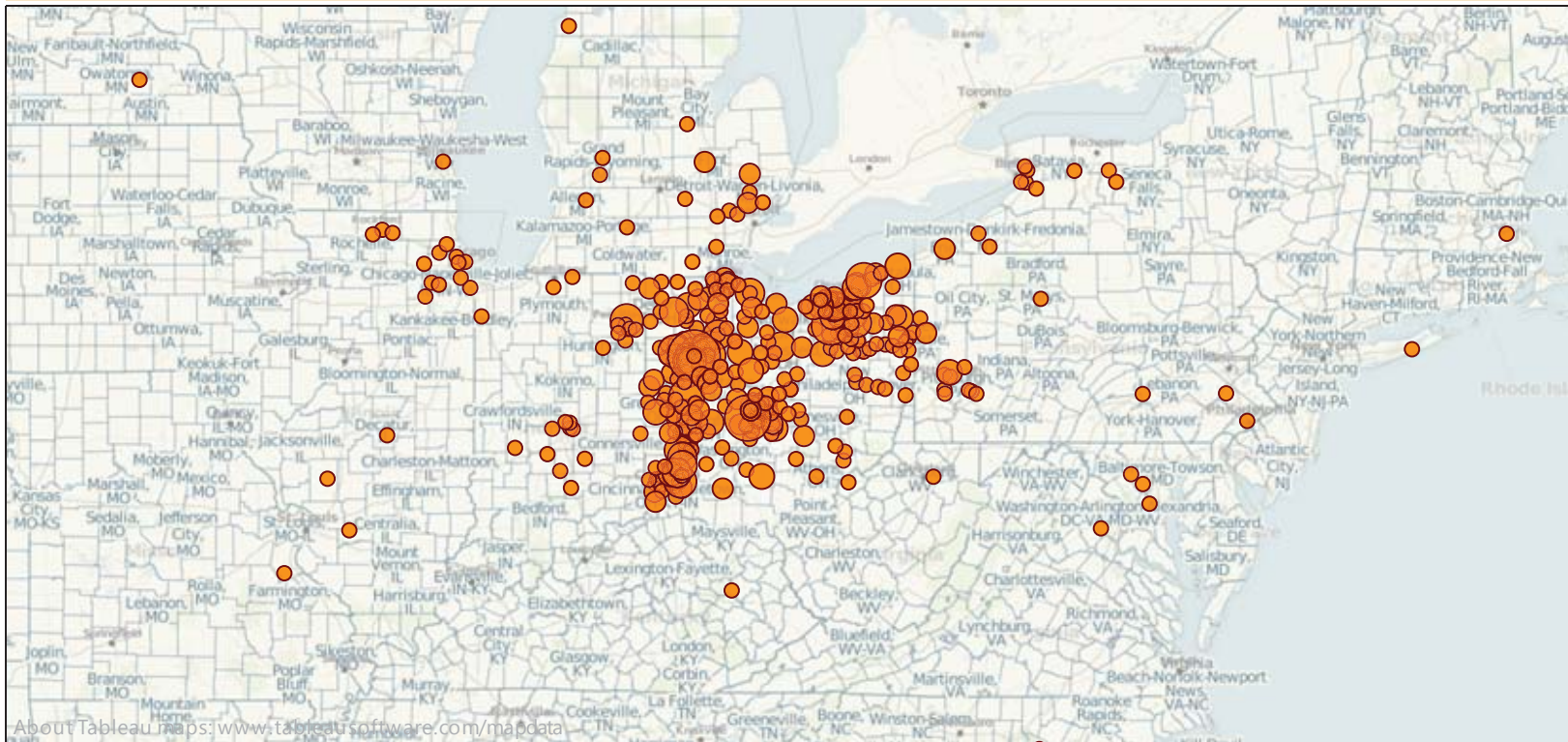


Map is based on the permanent address listed for the students at the time of census.

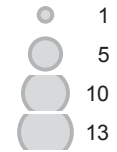
Source: ONU_CENSUS_STUDENT

Ohio Northern University - Enrollment Census Report

First-Time Freshman Students from Ohio and Neighboring States by Zip Code (Fall 2012)



Number of Records

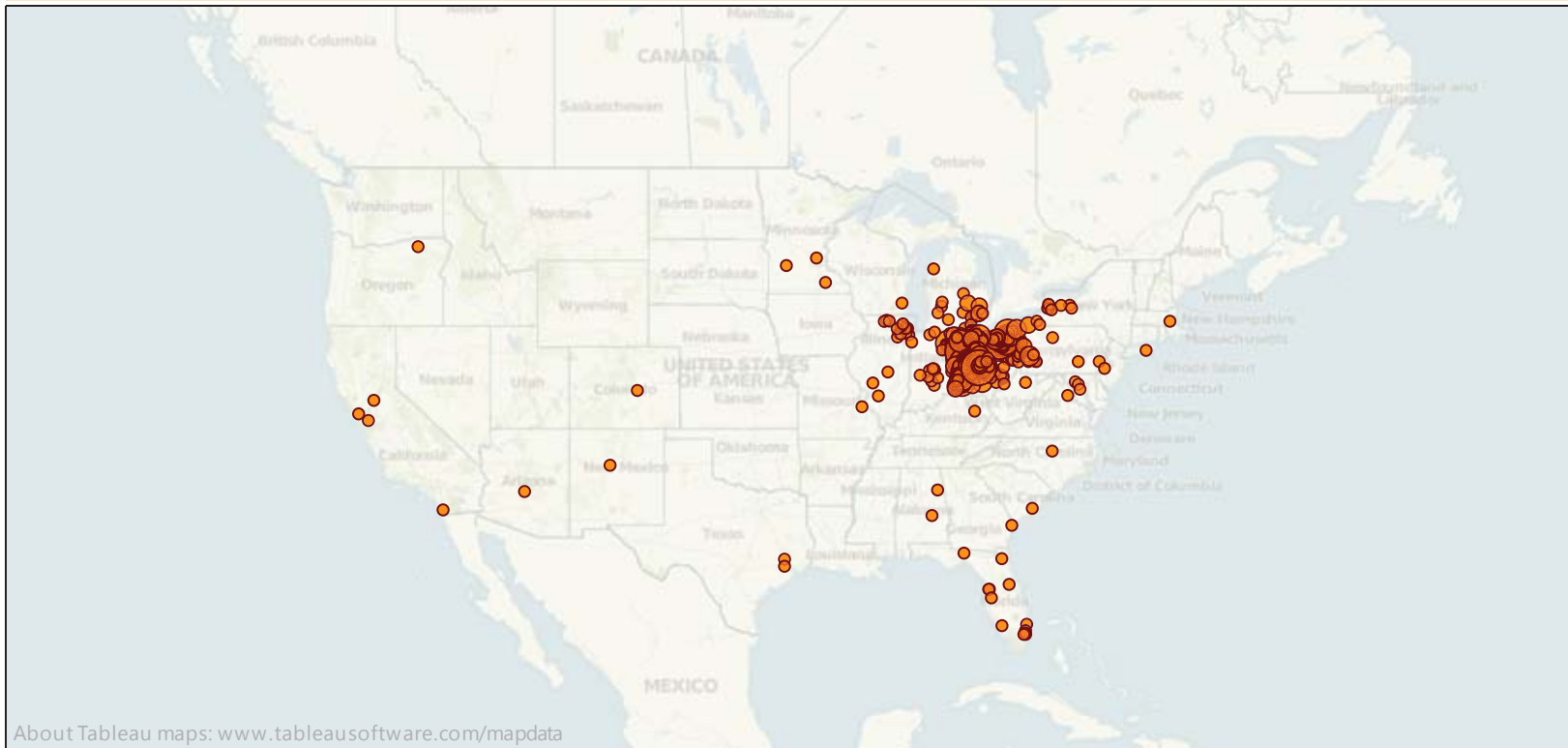


About Tableau Maps: www.tableausoftware.com/mapsdata

Map is based on the permanent address listed for the students at the time of census.

Source: ONU_CENSUS_STUDENT

Ohio Northern University - Enrollment Census Report First-Time Freshman Students from Continental United States by Zip Code (Fall 2012)



Map is based on the permanent address listed for the students at the time of census.

Source: ONU_CENSUS_STUDENT